

TOWER



THEATRE FOUNDATION

TECHNICAL INFORMATION PACKET

Tower Theatre
835 NW Wall Street – Bend, OR 97703
541.323.9155

Contacts:

<p>Erik Anderson Production Manager Erik@TowerTheatre.org 818.259.4114 (c)</p>	<p>Stephanie Johnson Director of Events StephanieJ@TowerTheatre.org 541.323.9155 (o)</p>
---	---

- Rental includes use of Box Office, Lobby, Auditorium, Stage, Backstage, and Greenroom.
- Rental includes use of ClearCom, Audio Control, Public Address, Lighting Control, and Pre-Hung Lighting Systems.
- Additional items and services also available on request or thru local rent.

Seating Capacity:

Seating Capacity is **460**. 312 on the Main Floor and **148** in the Balcony. The first three rows on the main floor can be removed - lowering capacity to **404**. House left of the Audio Console, 4 seats can be removed for acts touring with Audio and/or Lighting consoles – lowering capacity by 4.



Stage Dimensions with Moveable Orchestra Pit

(see drawing):

- Fixed opening: 34' W x 18' 4" H
- Trapezoidal stage: 24' u.s - 34' d.s. W x 29' D x 18' H
- Plaster line to back wall: 25'
- Plaster line to front of apron: 4'
- Plaster line to front of apron with pit at stage level: 13'
- Sprung floor with marine grade plywood.
- No stage traps or stage elevators
- Screwing into floor and walls may be allowed *Subject to Approval*

Orchestra Pit (see drawing):

- Motorized Lift: Spiralift
- Elevator platform: 39' W x 9' 4" D
- Pit can be moved to 4 preset positions:
 - Basement, Orchestra, Audience, Stage
- At stage level, the standard stage is extended 9' 4" at center line.
- Capacity: +/- 33 Musicians
- Lifting Capacity: 15,000lbs

Audio Package:

- FOH Console: Yamaha CL-5
- Stage Boxes:
 - Yamaha RIO3224d on Stage
 - Yamaha TIO1608d at AV position in the Lighting / AV Booth
- Main PA: 16x Nexo GEO S12 (7x S1210 and 1x S1230 per side)
- Front Fill: 4x Nexo PS8 Single 8" 2way
- Subs: 2x Nexo Alpha S2 Dual 18"
- Stage Monitors: 6x Yamaha DSR112 Single 12" 2way stage monitors (Monitors controlled from FOH)
- 4 channels of Shure ULX/QLX Wireless (Hand Held or Body Packs)
- Mic Package, Stands, Cables

Additional Items on request:

- 16 channels of Shure ULX/QLX Wireless (10 HH and 20 Body Packs in total)
- All other audio sourced locally.

Lighting Package (See House Lighting Plot):

- Console ETC: ION
- Dimmers: 120x 2.4kw dimmers (some repeating circuits).
- 24x ETC PAR
- 38x ETC PARnel
- 12x ETC Source Four 19'
- 10x ETC Source Four 26'
- 12x ETC Source Four 36'
- 10x ETC Source Four Zoom 15'-30'
- 12x Chauvet Rogue R2 Wash (Grid Hung Intelligent)

Additional Items on request:

- 4x Chauvet Intimidator Hybrid 140SR (Floor Package Intelligent)
- 1x Lycian Super Arch 400 Follow Spot (Lighting / AV Booth)
- 2x 750w ETC Source Four with iris in the catwalk can be used as Spots
- All other lighting sourced locally.

Grid Height (All instruments hang below grid):

- Dead Hung Pipe Grid for all house lighting instruments.
- Upstage height to grid: 17'5"
- Downstage height to grid: 18'10"
- Pit at stage level height to grid: 22'

Rigging:

- Points ONLY - No additional rigging supplies in house.
 - Up Stage Beam: 2x 1-TON points - Round Sling and 5/8" Shackles
 - Mid Stage Beam: 4x ½-TON points - Round Sling and 5/8" Shackles
- Stage to Pin of shackles 20'6"
- Accessed with Vertical Genie Lift
- Counterweighted line sets: NONE.

Audio Visual:

- Main Projector: DPI Titan 33,000 4k UHD. Throw Distance approximately 80'
- Front Projection Roll-Up Screen (Maximum image size is approximately 24'x18')
- Screen is located 2' Up Stage from the proscenium and Up Stage of the Main Curtain
- Extron IN1608 Manual 8 Input Switcher
- Multiple positions throughout building for Video Inputs to switcher.
- Stage Projector: Benq MX816ST. Throw Distance approximately 10'
- Podium (with Gooseneck Mic, Power, and AV Connections)

Power:

- 6x 15a Circuits on stage
- 100 Amp 3 Phase Company Switch located Up Stage Right

Stage Drapes:

- Up Stage Curtain: Black
- Main Curtain: Violet 22'H x 34'W. Manually operated from stage right. Functions as traveler only.
- Up Stage Cyclorama
- Decorative Silk Fabric
- Decorative Sheer Fabric
- Decorative Black Screen

Backline:

- 1998 Steinway Model B Classic Grand Piano – Black
- 35x Black Adjustable Music Stand
- All other backline sourced locally.

Staging:

- None. All Staging sourced locally.

Chairs:

- 50x Red Orchestra Chairs
- 55x Black Orchestra Chairs

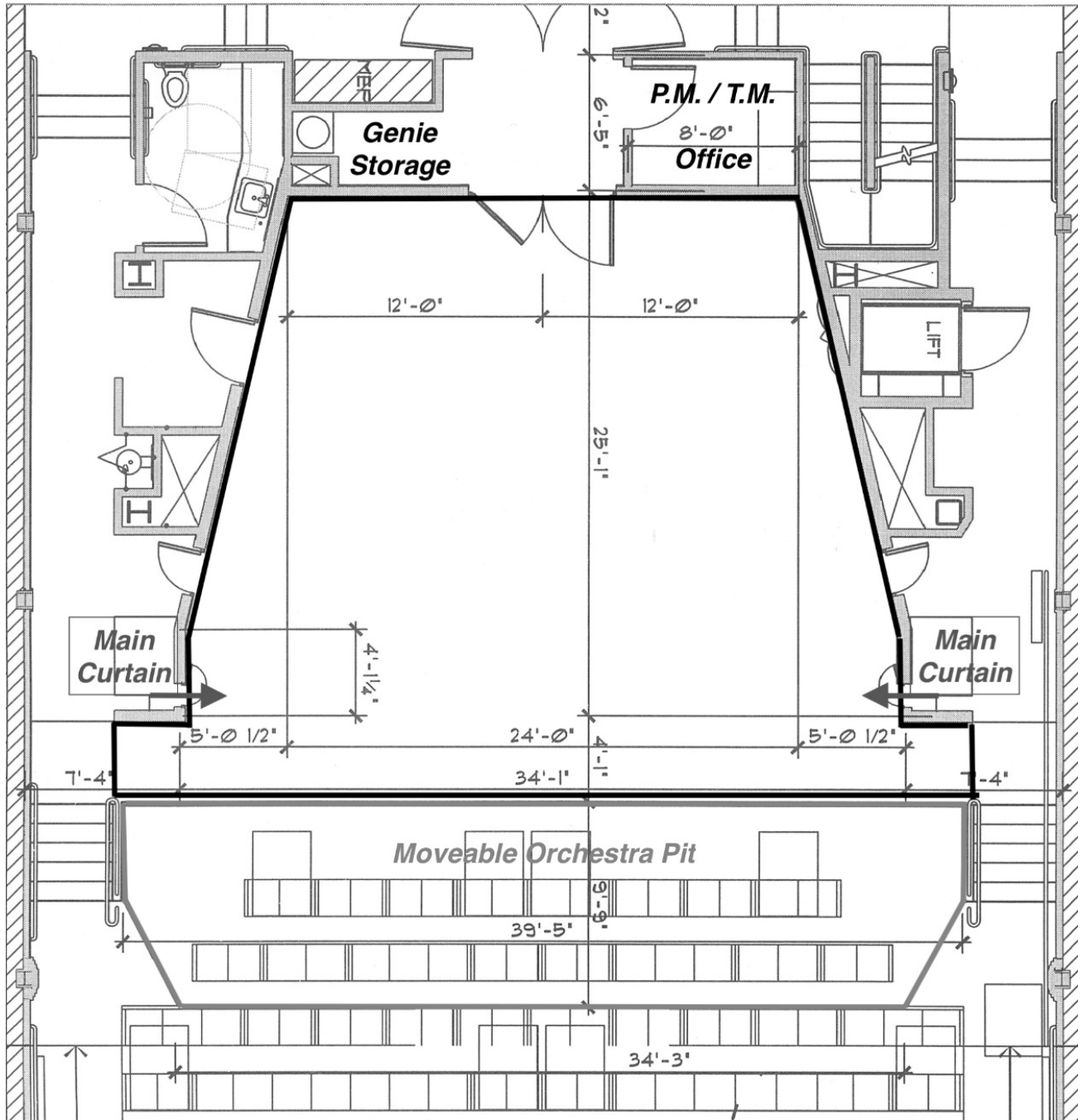
Dressing Room:

- Main dressing room is on the 2nd Floor, stair access only.
- Average Capacity is 8-10
- Two private restrooms
- No Showers
- Washer and Dryer
- Ironing Board, Iron, and Steamer
- Fridge, Microwave, Coffee, and Electric Kettle
- No private corridors connecting Back Stage to either FOH Position or the Lighting / AV Booth.

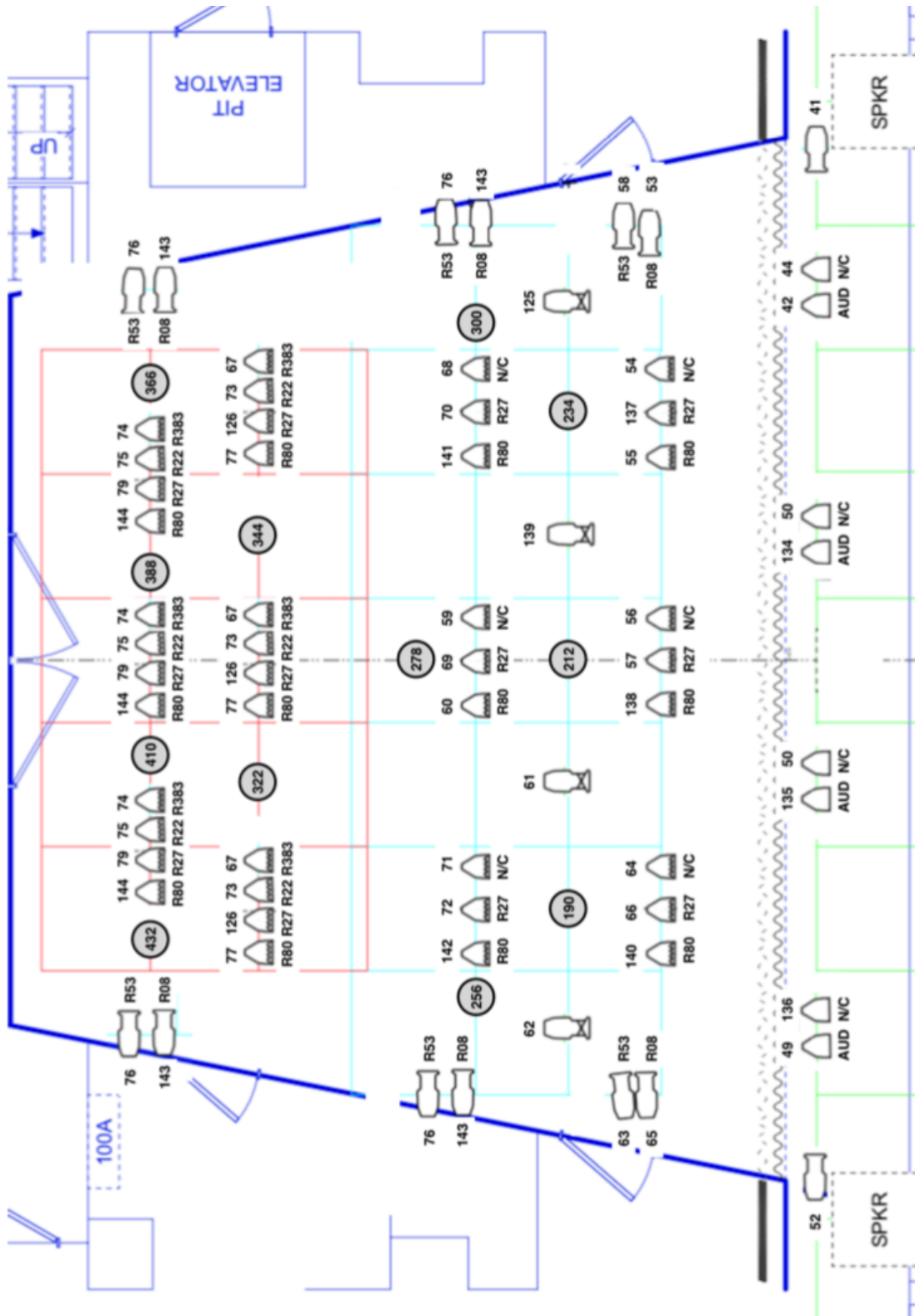
Loading, Stage Doors, and Parking:

- Load-In doors and artist entrance are located on the west side of the theatre in Brooks Alley.
- Load-In opening is 8'6"W x 9'0"H (Stage access is 6'6"W x 8'0"H)
- Alley to stage level is 16"
- Brooks Alley is one-way and must be travelled from South to North.
- Shore Power available for one bus.
- Busses and trucks must park in the designated areas. *NO EXCEPTIONS*
- No Overnight parking (per Bend City ordinance) unless advanced.
- All vehicle logistics must be arranged with the Production Manager at least two weeks in advance.

Stage Drawing



House Plot - Stage



House Plot – Front

